



Basic & Advanced Training for Ships Operating in Polar Waters



Language

English



Course duration

5 days, 09:00 - 17:00



Location

Simwave, Rotterdam



This course provides training to masters, chief mates & officers in charge of a navigational watch and/or management level to operate ships in polar waters and to address those additional provisions as required by the Polar Code, in order to take into account the climatic conditions of polar waters and to meet appropriate standards of maritime safety and pollution prevention.

Course content

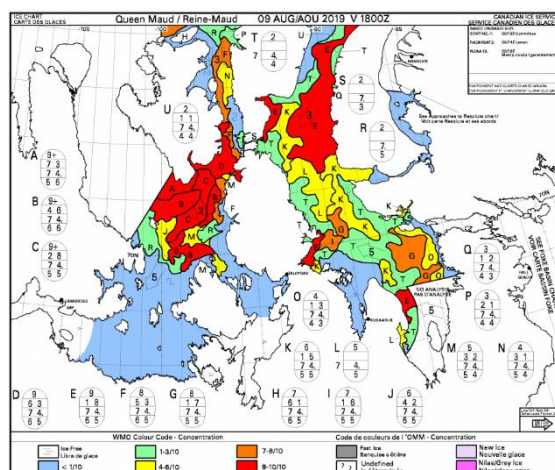
The objective of this course is to familiarize the participants with navigating in ice covered areas including its special challenges and provide them with the right knowledge, skills & attitude according to the STCW Competence tables A-V/4.1 & A-V/4.2 following the imo model course 7.11 & 7.12. Countries having to deal with ice navigation, urge to implement IMO guidelines in a course and certify participants. For those regularly sailing in ice covered waters demands become more and more stringent, especially the polar regions press for better education concerning this kind of specialized navigation.

The theoretical part of this course will cover:

- Ice nomenclature, characteristics and detection
- Regulations and standards
- Vessel characteristics & performance
- Maneuvering in ice
- Crew & vessel preparations, awareness and limitations
- Pollution prevention
- Voyage planning and reporting
- Icebreaker assistance & Search And Rescue
- Working conditions and safety
- Emergency Response & Decision Support

Polar Waters include both Arctic and Antarctic Waters as defined in SOLAS and MARPOL regulations.

The areas & scenarios developed are as close to reality as it can get.



Practical content

The lectures will take place in a classroom and will make use of practical examples. In addition simulator training is incorporated in the course. The simulator exercises create situations that provide an opportunity to acquire the required skills as specified in the regulations.





Certification

This training programme is approved by several Flagstate Authorities.

Upon successful completion of the course a certificate for Basic & Advanced training for ships operating in polar waters will be issued.

Entry standards

This course is meant for masters, chief mates and officers in charge of a navigational watch on ships operating in polar waters, holding a valid CoC.

After this course

This course provides you with the most important practical knowledge and theoretical background to successfully navigate in ice covered areas. After 2 months of sailing time in polar waters your CoP can be requested at your respective Flag state body.

Why Basic & Advanced Training Ice Navigation in Polar Waters

- Theory and practice combined: you will improve your theoretical background knowledge in combination with realistic practical exercises.
- To enhance safe operations for Superyachts and Expedition vessels cruising towards Polar regions
- The language of instruction during this course is English.



Contact

Simwave B.V.

Pesetastraat 7-9

2991 XT Barendrecht

T +31 (0)10 310 76 00

welcome@simwave.nl

www.simwave.nl

KNOWLEDGE
SKILLS
ATTITUDE

