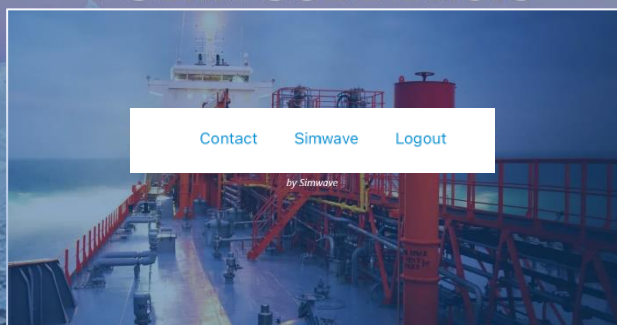


**POLAR CODE BASIC**



Home > Course > Polar Code Basic



**Language**

English



**Course duration**

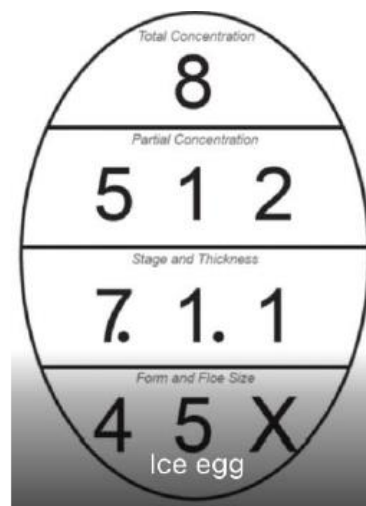
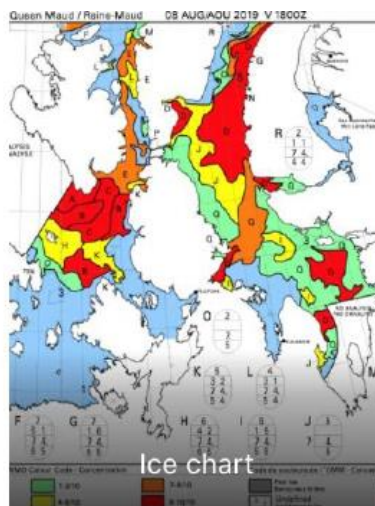
18 Hours



**Location**

Web based - online

Learning Management System



## Introduction

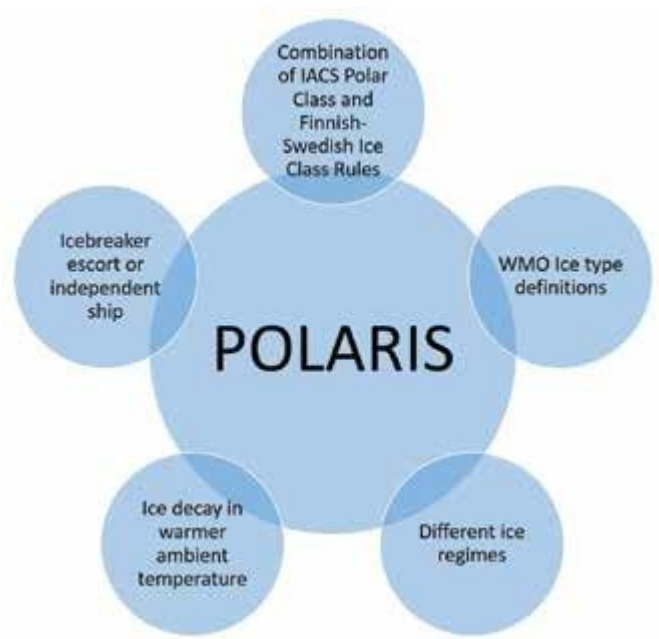
This course provides training to masters, chief mates & officers in charge of a navigational watch and/or management level to operate ships in Polar waters and to address those additional provisions as required by the Polar Code, in order to take into account the climatic conditions of polar waters and to meet appropriate standards of maritime safety and pollution prevention.

## Course content

The objective of this course is to familiarize the participants with navigating in ice covered areas including its special challenges and provide them with the right knowledge, skills & attitude according to the STCW Competence table A-V/4.1 following the imo model course 7.11. Countries having to deal with ice navigation, urge to implement IMO guidelines in a course and certify participants. For those regularly sailing in ice covered waters demands became more and more stringent, especially the polar regions press for better education concerning this kind of specialized navigation.

The e-Learning course will cover:

- Introduction to Polar regions
- Polar climates & shipping routes
- WMO Ice nomenclature, characteristics and detection
- Vessel characteristics & performance
- Maneuvering techniques in ice
- Crew & vessel preparations and awareness
- Working conditions and safety
- Regulations and standards
- Pollution prevention
- Voyage planning and reporting
- POLARIS & AIRSS systems
- Icebreaker assistance



## Practical content

The course material is provided through an online learning environment via our Learning Management System.

Polar Waters include both Arctic and Antarctic Waters as defined by the polar Code/ SOLAS and MARPOL regulations.





## Certification

This training programme is approved by the Marshall Islands Registration and accepted/endorsed by other Flagstate Authorities.

Upon successful completion of the e-course a Certificate of Proficiency for Basic training for ships operating in polar waters will be issued.

With this certificate the official CoP can be acquired at the respective Flag State Authority.

## Entry standards

This course is meant for masters, chief mates and officers in charge of a navigational watch on ships operating in polar waters, holding a valid CoC.

## After this course

This course provides you with the most important knowledge and theoretical background to successfully navigate in ice covered areas.

## Why Basic training in ice navigation in Polar Waters

- To improve your theoretical background & knowledge on specialized ice navigation.
- To enhance safe operations prior to operations in Polar regions.

## Contact

Simwave B.V.

Pesetastraat 7-9

2991 XT Barendrecht

T +31 (0)10 310 76 00

[welcome@simwave.nl](mailto:welcome@simwave.nl)

[www.simwave.nl](http://www.simwave.nl)

**KNOWLEDGE**

**SKILLS**

**ATTITUDE**

